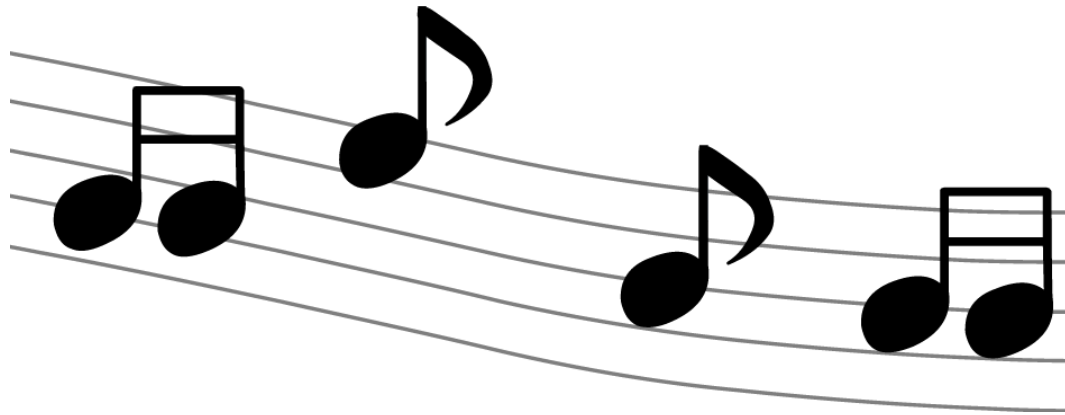
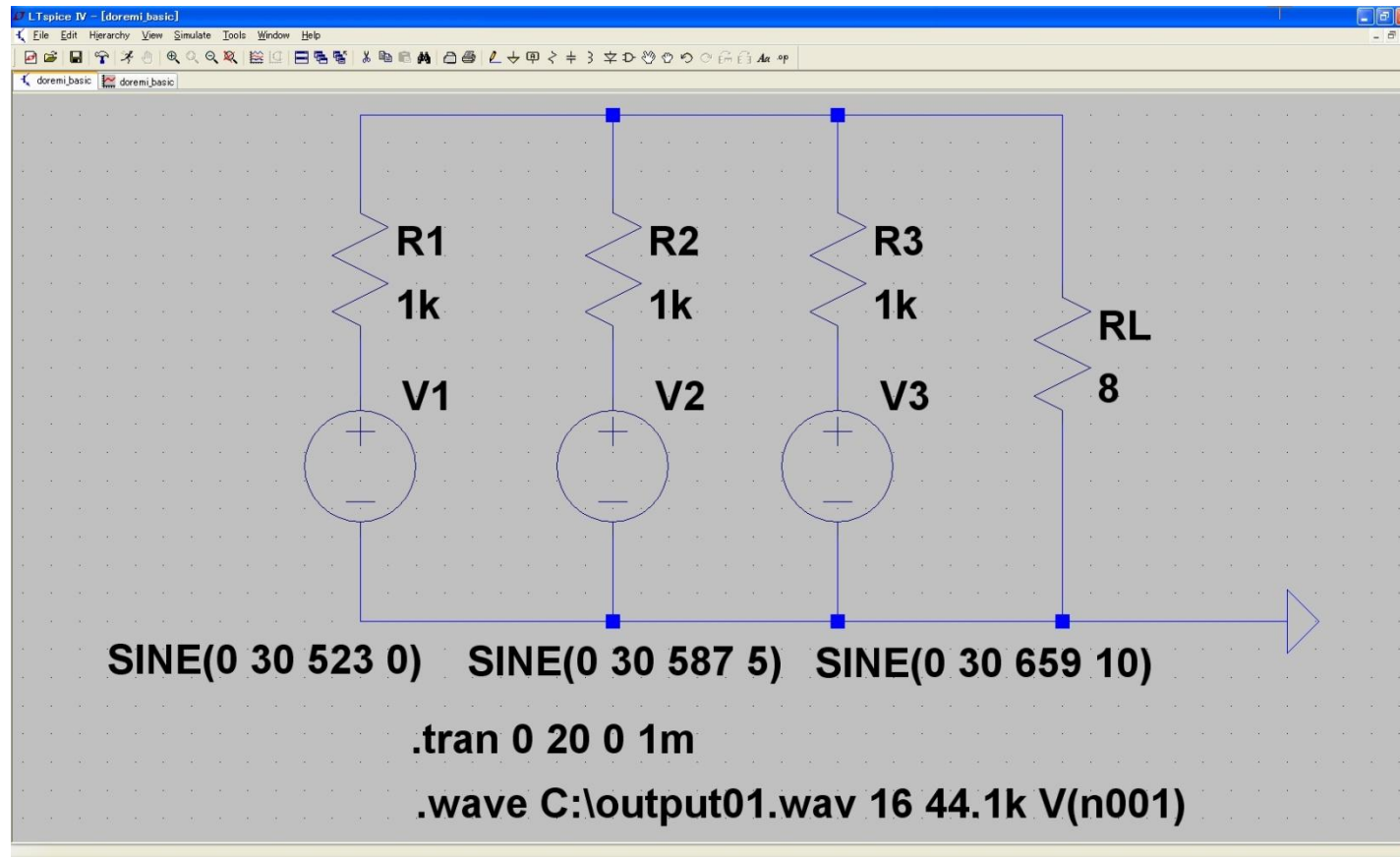


ド レ ミ
オフセット電圧がゼロの場合



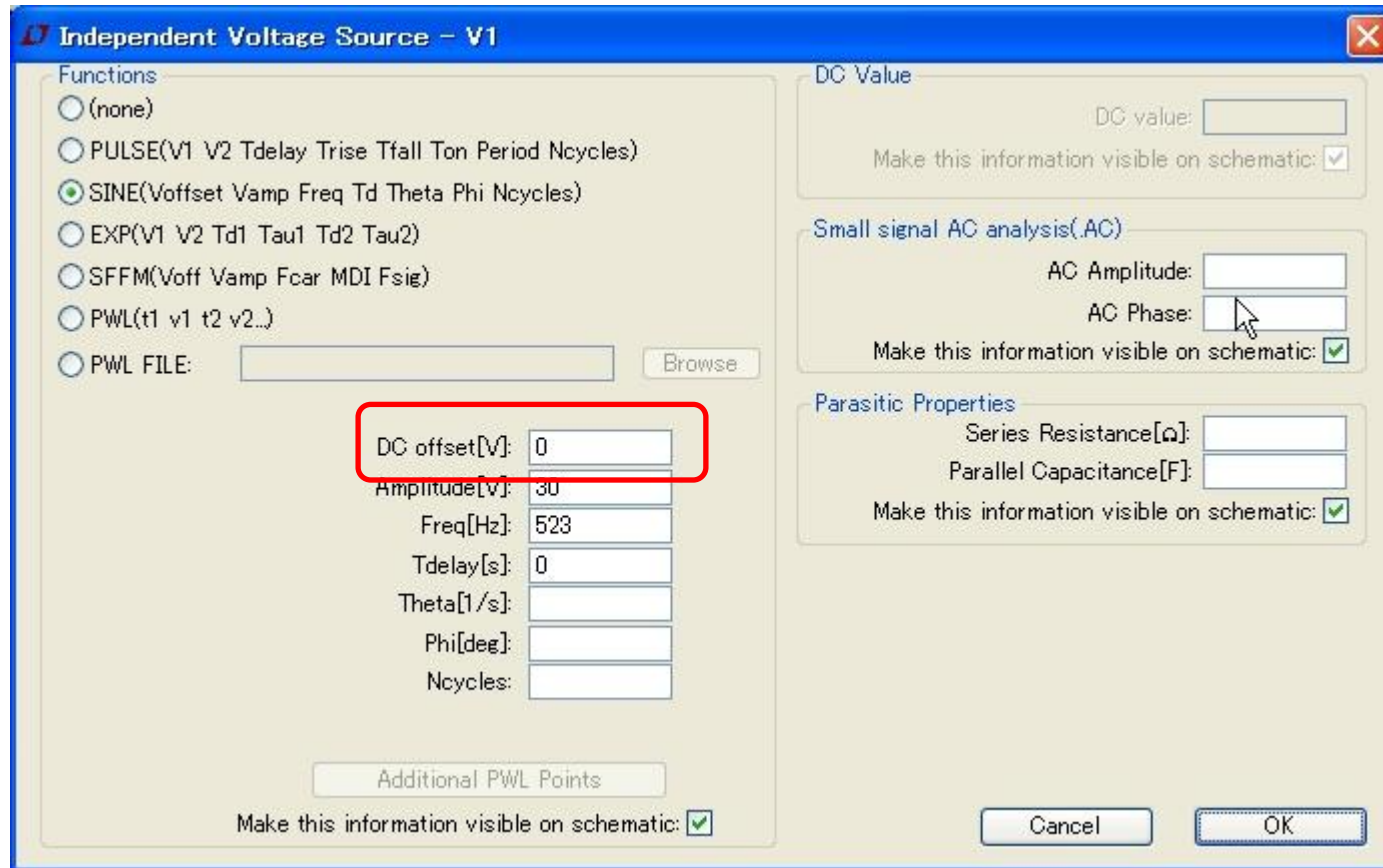
[株式会社ビー・テクノロジー](#)

LTspiceで回路図作成



V1はドの周波数
V2はレの周波数
V3はミの周波数

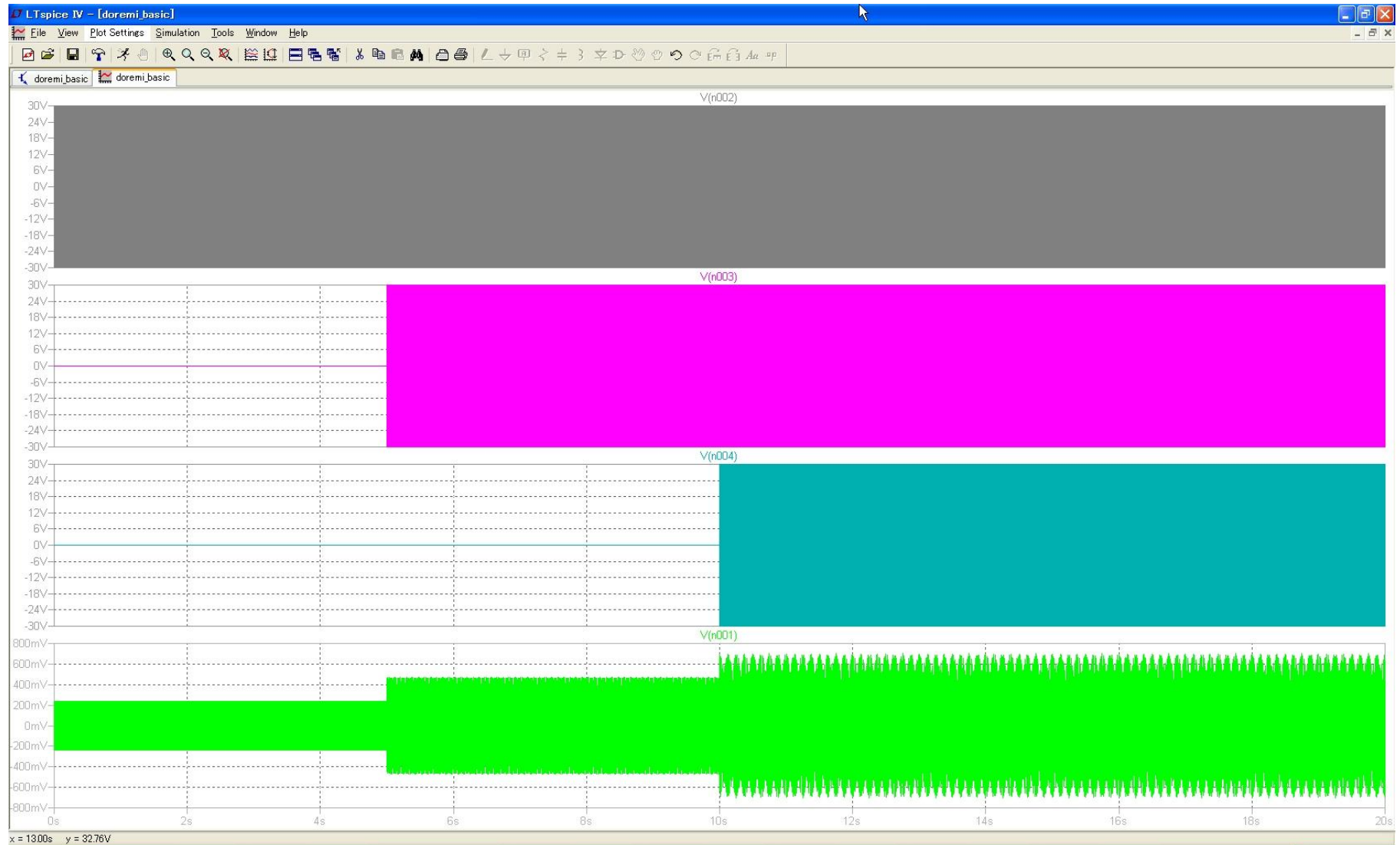
LTspiceでのサイン電源の設定



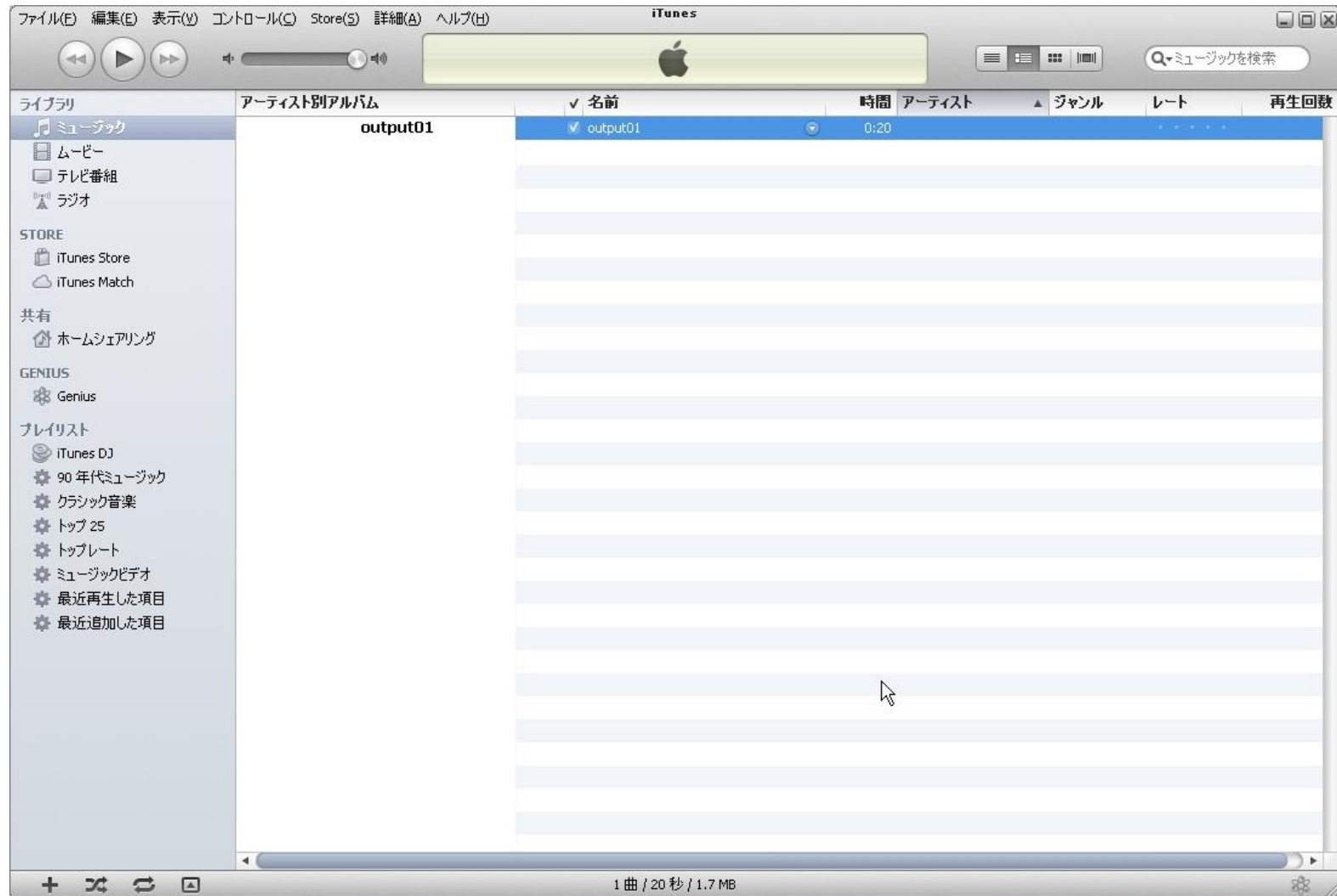
The image shows the 'Independent Voltage Source - V1' dialog box in LTspice. The 'Functions' section on the left has the 'SINE(Voffset Vamp Freq Td Theta Phi Ncycles)' option selected. Below this, the 'DC offset[V]' field is highlighted with a red rectangle and contains the value '0'. Other parameters like Amplitude, Freq, Tdelay, Theta, Phi, and Ncycles are also visible. On the right, the 'DC Value' section has a 'DC value' field and a checked 'Make this information visible on schematic' checkbox. The 'Small signal AC analysis(AC)' section has 'AC Amplitude' and 'AC Phase' fields, with the 'Make this information visible on schematic' checkbox checked. The 'Parasitic Properties' section has 'Series Resistance[Ω]' and 'Parallel Capacitance[F]' fields, with the 'Make this information visible on schematic' checkbox checked. At the bottom, there is an 'Additional PWL Points' button and a checked 'Make this information visible on schematic' checkbox. The 'Cancel' and 'OK' buttons are at the bottom right.

DC offsetを0に設定

LTspiceでシミュレーション結果



音声ファイル(.wav)の再生



関連ファイルは下記のURLにてダウンロードできます。

<http://ow.ly/cyVY8>

ご体験下さい。