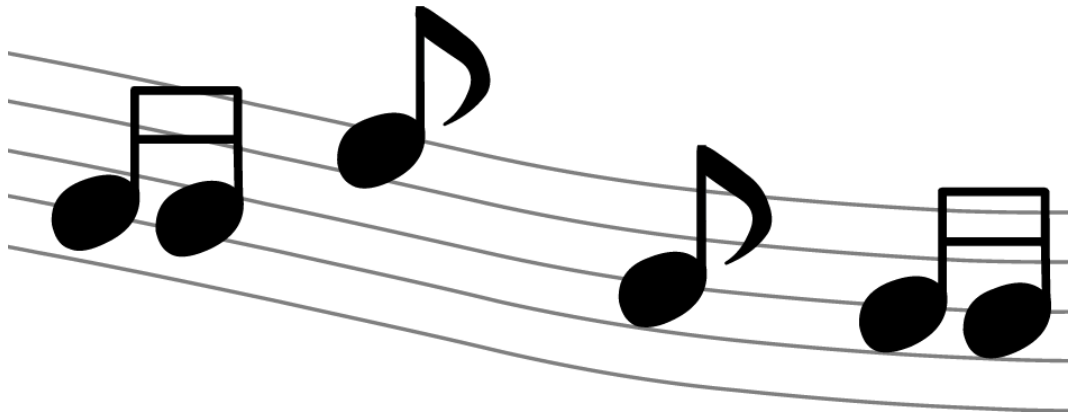
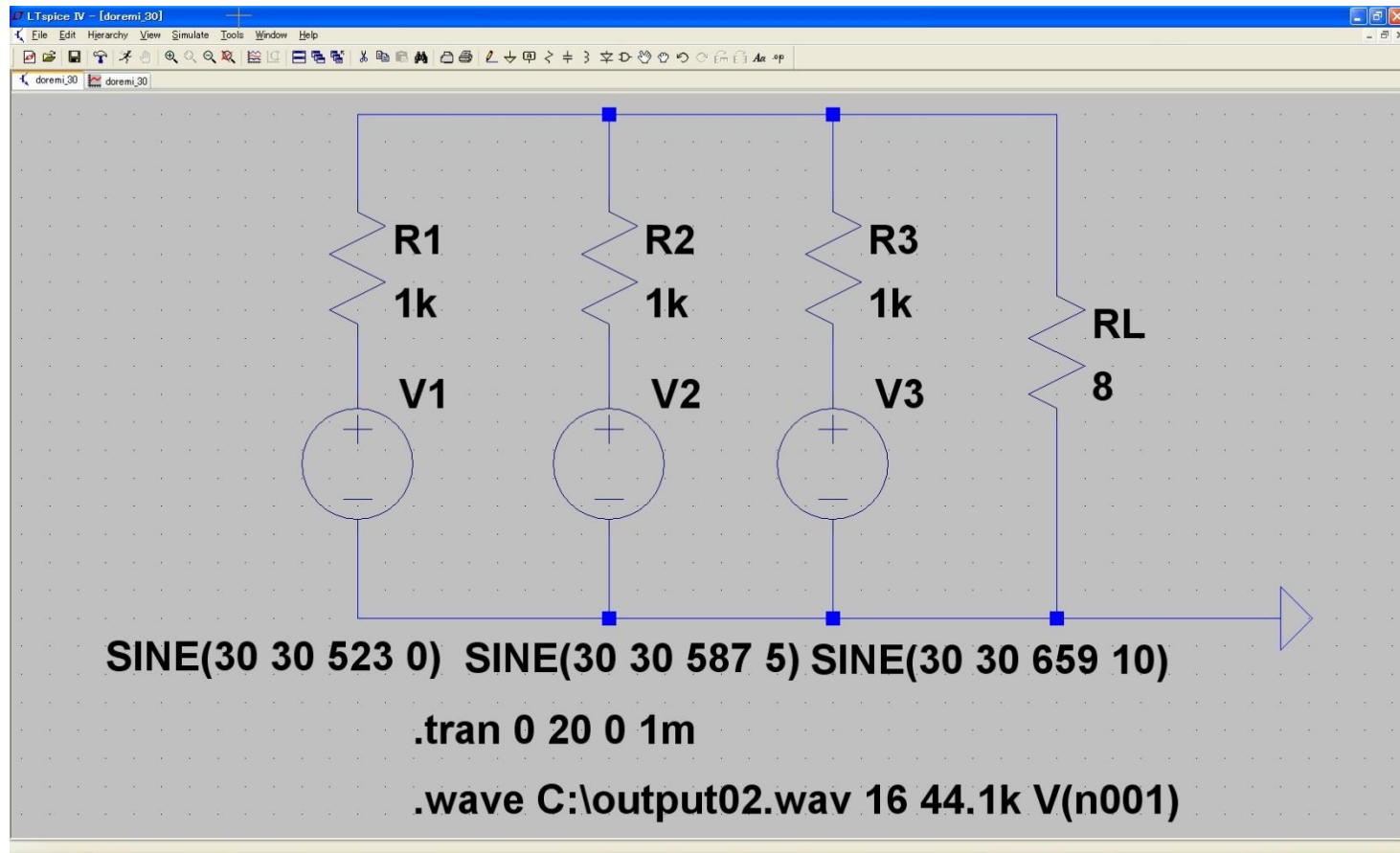


ド レ ミ
オフセット電圧が30[V]の場合



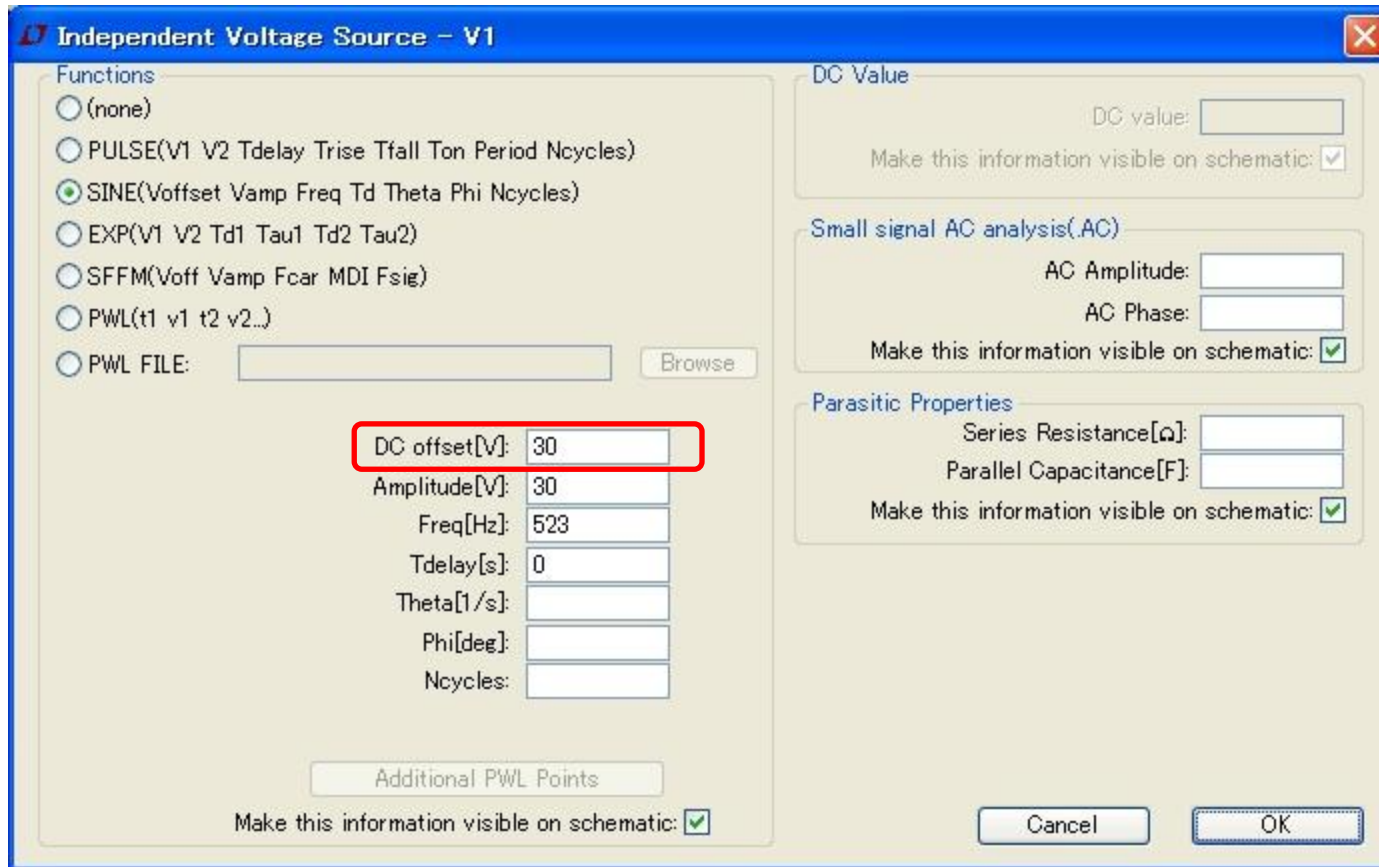
[株式会社ビー・テクノロジー](#)

LTspiceで回路図作成



V1はドの周波数
V2はレの周波数
V3はミの周波数

LTspiceでのサイン電源の設定



The image shows the 'Independent Voltage Source - V1' dialog box in LTspice. The 'Functions' section on the left has the 'SINE' option selected. Below it, the 'DC offset[V]' field is highlighted with a red rectangle and contains the value '30'. Other parameters like Amplitude, Frequency, and Delay are also visible. On the right, the 'DC Value' section has an empty 'DC value' field. The 'Small signal AC analysis(AC)' section has empty fields for 'AC Amplitude' and 'AC Phase'. The 'Parasitic Properties' section has empty fields for 'Series Resistance' and 'Parallel Capacitance'. Checkmarks are present for 'Make this information visible on schematic' in the DC, AC, and Parasitic sections. 'Cancel' and 'OK' buttons are at the bottom right.

Independent Voltage Source - V1

Functions

- ☐ (none)
- ☐ PULSE(V1 V2 Tdelay Trise Tfall Ton Period Ncycles)
- ☒ SINE(Voffset Vamp Freq Td Theta Phi Ncycles)
- ☐ EXP(V1 V2 Td1 Tau1 Td2 Tau2)
- ☐ SFFM(Voff Vamp Fcar MDI Fsig)
- ☐ PWL(t1 v1 t2 v2...)
- ☐ PWL FILE:

DC offset[V]: 30

Amplitude[V]: 30

Freq[Hz]: 523

Tdelay[s]: 0

Theta[1/s]:

Phi[deg]:

Ncycles:

Make this information visible on schematic: ☒

DC Value

DC value:

Make this information visible on schematic: ☒

Small signal AC analysis(AC)

AC Amplitude:

AC Phase:

Make this information visible on schematic: ☒

Parasitic Properties

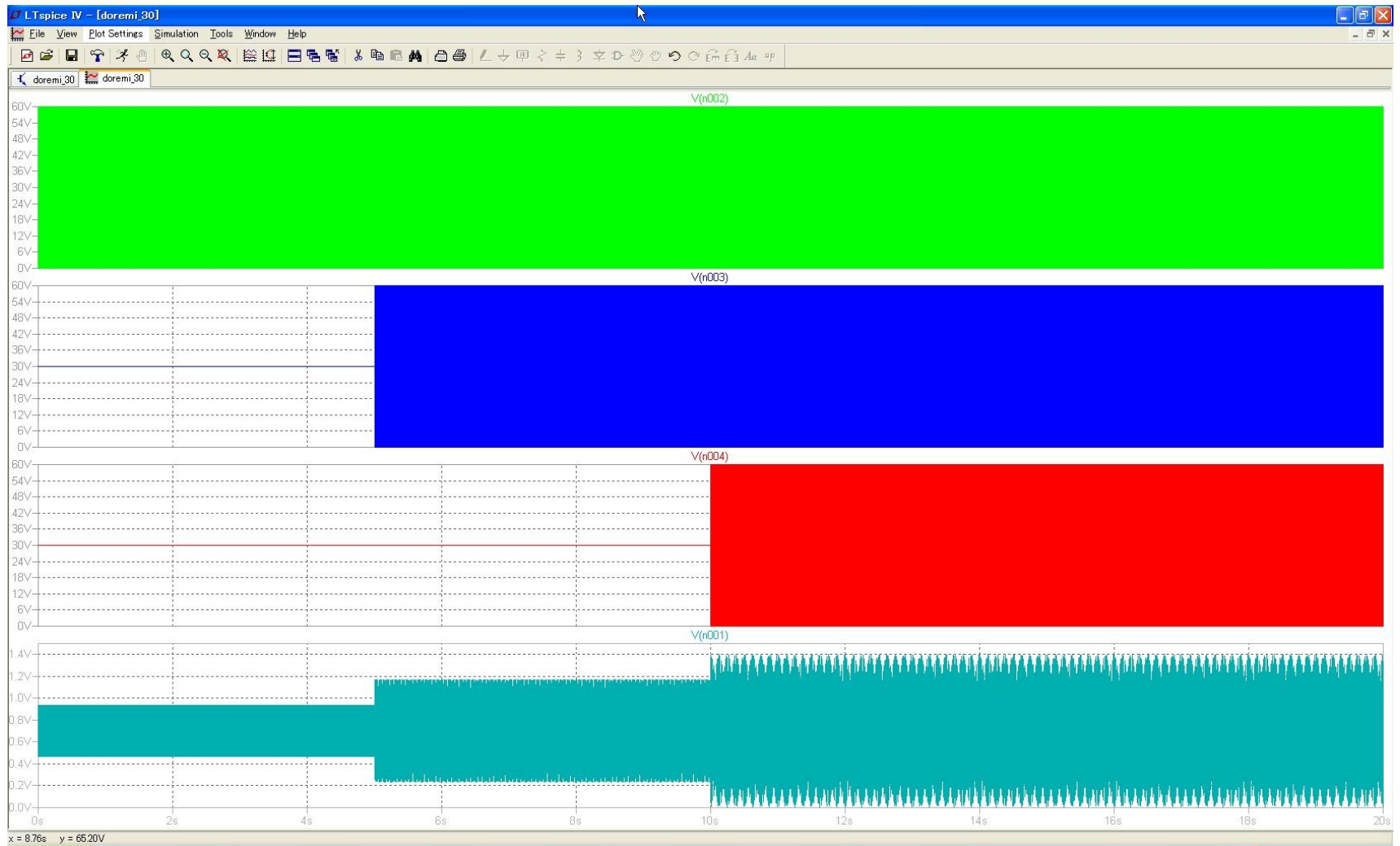
Series Resistance[Ω]:

Parallel Capacitance[F]:

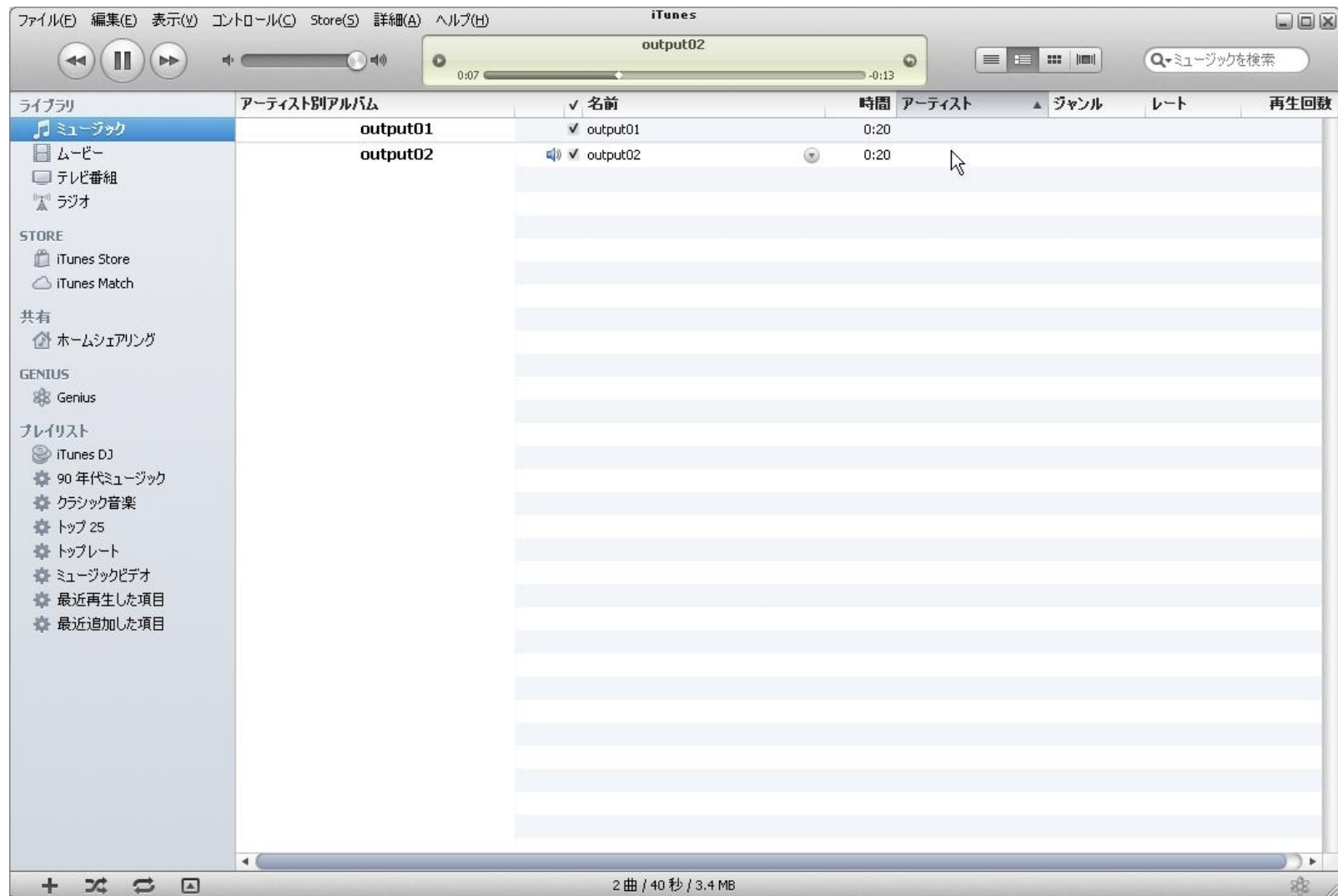
Make this information visible on schematic: ☒

DC offsetを30[V]に設定

LTspiceでシミュレーション結果



音声ファイル(.wav)の再生



関連ファイルは下記のURLにてダウンロードできます。

<http://ow.ly/cyWPB>

ご体験下さい。